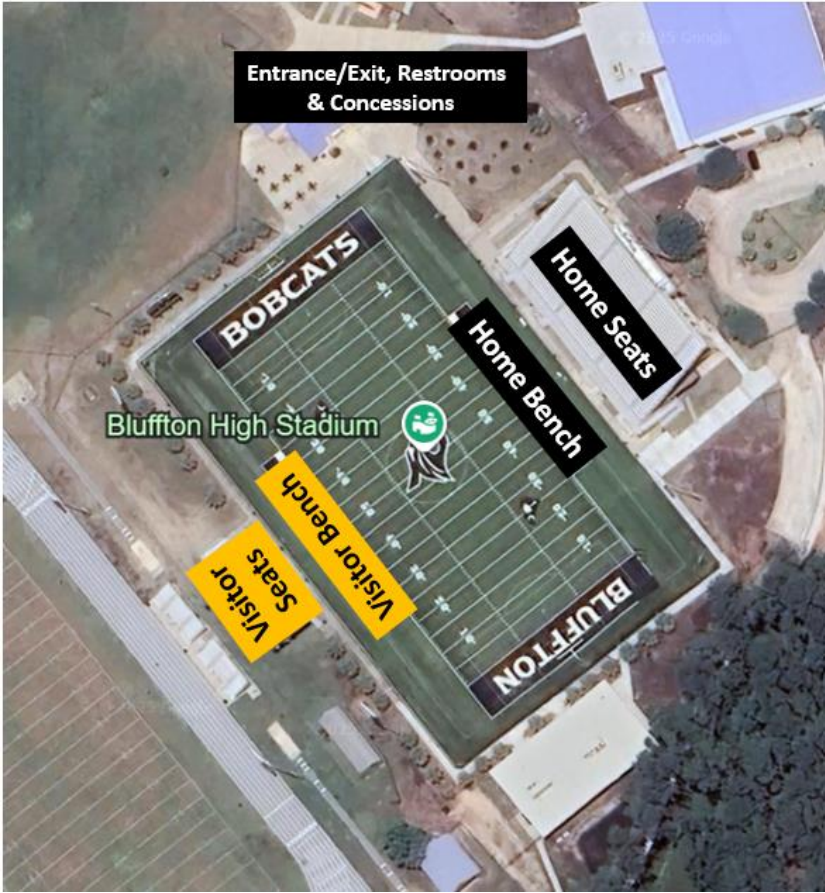
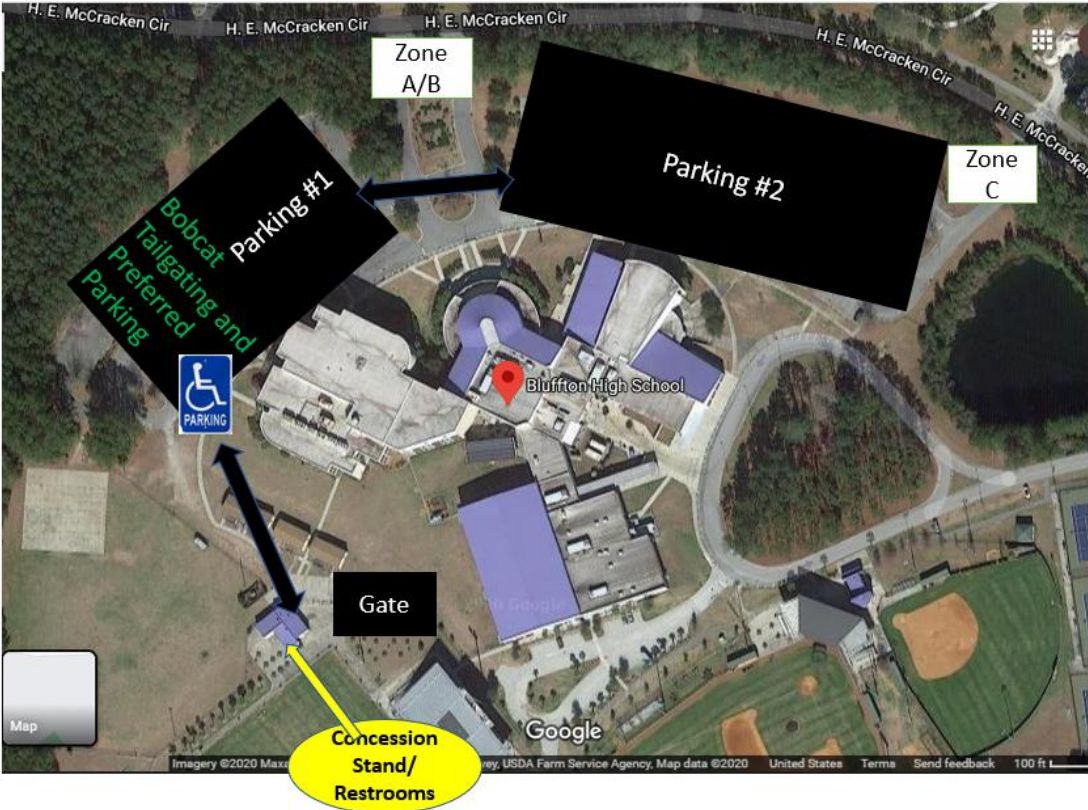


Football Games at Bluffton High School (Spectators)



Football Games at Bluffton High School (Spectators)

Home/Visitor Spectators Notes:

- Parking--Enter "Zone A/B" or "Zone C"



- ---Located at ZONE A/Parking #1. Access by turning right at main school entrance and proceed to end of parking lot.
- Spectators are encouraged to sit in designated bleachers
 - Home fan bleachers are on the press box side
 - Visitor fan bleachers are on the side opposite of the press box
- Standing room: Do not stand behind team benches or behind cheerleaders
- All spectators must adhere to PA announcements and signage
- Adhere to Beaufort County School District's Clear Bag Policy (more details below)

Ticketing/Gates: <https://beaufortschools.hometownticketing.com/embed/all?schools=32>

- Online ticketing strongly encouraged, gate ticket sales available as well
- Kindergarten and under are free to regular season contests
- Varsity gates open at approximately 6:00 PM
- JV gates open at approximately 1 hour prior to kickoff
- BCSD badge access for employees only
- SCHSL passes will be accepted at the gate
- Middle and Elementary School students must be accompanied by an adult
- No loitering around concessions or walkways. Spectators are encouraged to watch the game from the bleachers.
- No outside food or drinks are allowed through the gate
- No re-entry; anyone leaving the venue must purchase a new ticket to reenter
- Ticket sales end at the end of the 3rd Quarter and no one allowed to enter the game throughout the conclusion of the game

Restrooms: Located at concession stand building

Food and Drink: Concession Stand/State of Mind Café

Inclement Weather and Emergencies: Follow stadium PA announcements and direction of emergency personnel and school/district administration.

Football Games at Bluffton High School (Spectators)



Clear Bag/No Bag Policy

Approved bags include— Clear Tote (12" x 6" x 12"),
1 Gallon Clear Plastic storage bag, Small Clutch
with wrist strap (not to exceed 4.5" x 6.5")

